



UNION CHRISTIAN COLLEGE ALUVA-2



SSR 5th CYCLE 2023



Criterion 7

7.1.2 Geo Tagged Photos of Facilities



1. Solar Panels

(<https://uccollege.edu.in/news/inauguration-of-60kv-solar-power-plant/>).



Figure 1 :Solar Panel installed in the Campus





Fig

3. Wheeling to the Grid

In an innovative move, college has established a "wheeling to the grid" arrangement with the local electricity distribution company. This means that excess solar energy generated on the campus is fed back into the power grid, allowing the college to earn energy credits. During periods of high energy consumption or low solar output, the college can draw on these credits to meet its electricity needs. This setup not only makes the college self-sufficient in terms of energy but also contributes clean energy to the surrounding community.

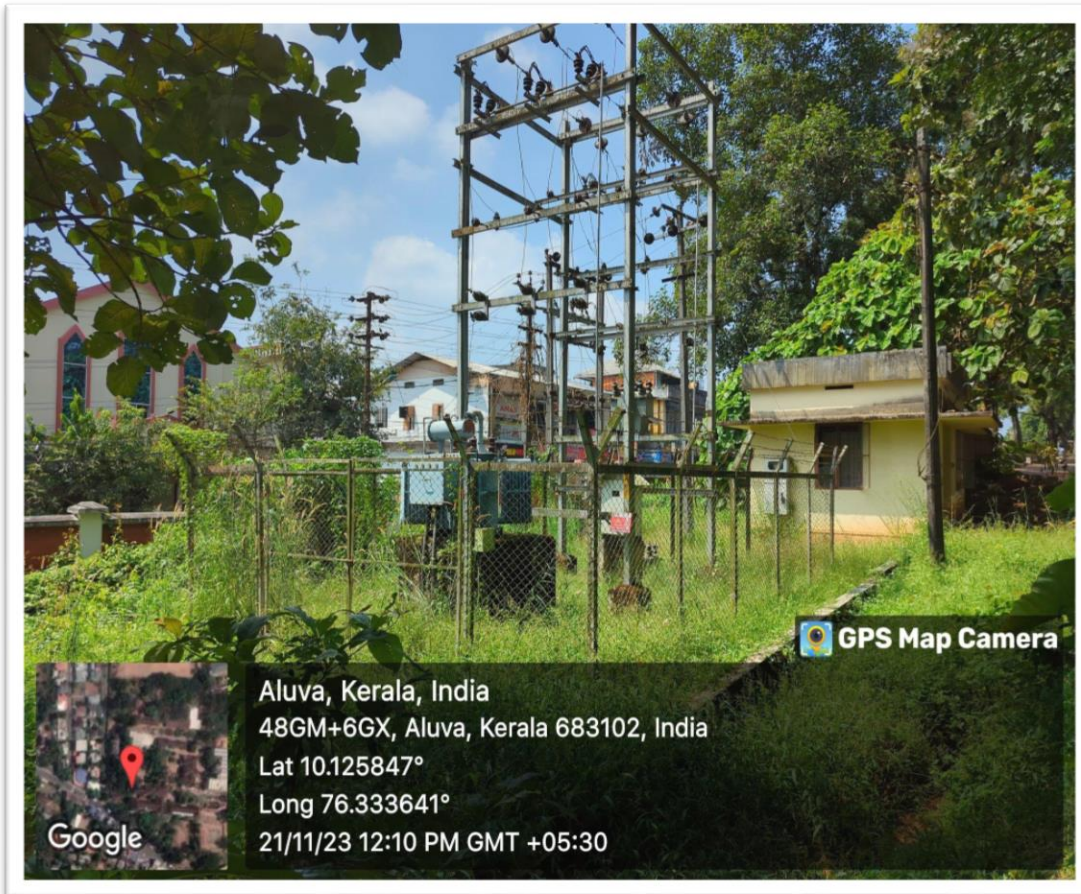


Figure 4 : "wheeling to the grid" arrangement



Figure 3 : Solar Grid Inverter



4. Sensor-based energy conservation

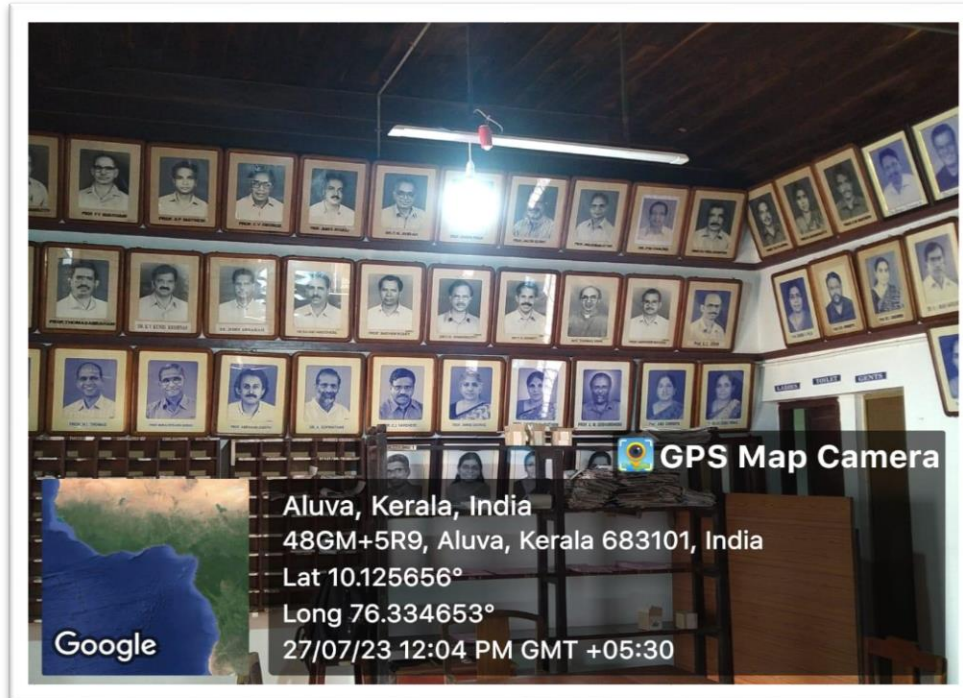


Figure 5 : Motion Sesor Installed in Common Staff room

5. Use of LED bulbs/power efficient equipments

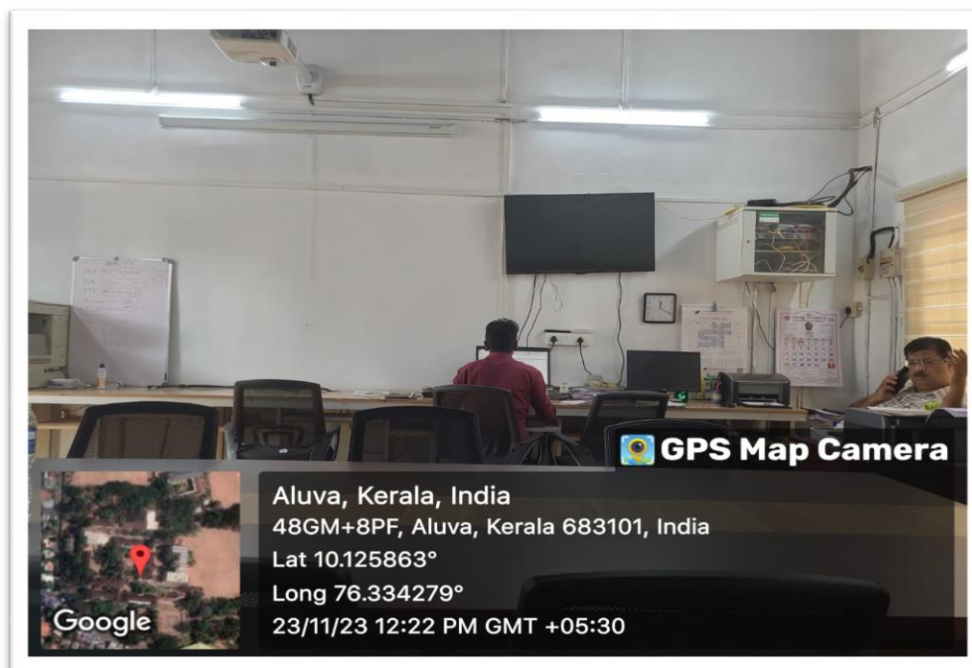


Figure 6 : Energy Conservation using LED tubes



6. Waste Segregation and Trash Bins:



Figure 7 : Trash Bins for Waste Segregation

7. Incinerator Installed in Campus



Figure 8 :Incinerator Installed in Campus



8. Deciduous trees and Dry leaf compost



Figure 9 : Dry Leaf Composting in Campus

9. Rain Water Harvesting System:.



Figure 10 : Rain Water Harvesting System



10. Rainwater Recharge to Wells:



Figure 11 : Rain Water Recharge to Wells